

MiniFusor™ / QuadFusor™ / T'Fusor™

Real-World Acoustics™



USER GUIDE

Thank you for purchasing **Auralex® MiniFusor™ / QuadFusor™ / T'Fusor™!**

These are highly effective acoustic diffusion devices that can be easily wall or ceiling mounted and the **QuadFusors** & **T'Fusors** are also sized to fit 2'x2' drop ceiling grids.

The **MiniFusors**, **QuadFusors** & **T'Fusors** are supplied with the **Auralex EZ-Stick Pro™** peel & stick tabs.

Be advised that the **EZ-Stick Pro Tabs** are designed for permanent installations and will damage drywall and painted surfaces when removed. For installations that require little or no damage to the wall surface we recommend the use of **Auralex EZ-Stick Tabs**. See your **Authorized Auralex dealer** for details.

Mark the target position on your wall or ceiling where the panel will be mounted using small pencil marks, pieces of masking tape or any similar non marring method. Be sure the wall surface where the **EZ-Stick Pro Tabs™** will adhere is free of dirt, dust or other oily contaminants. The use of rubbing alcohol to spot clean the wall where the tabs will adhere is recommended. Avoid the use of household cleaners.

Remove one of the release layers on the **EZ-Stick Pro Tabs** and affix it to the rear side of the perimeter flange at the desired locations, usually near the corners.

(Continued on back)

938-1212.QuadFusor TFusor MiniFusor User Guide.indd (09/05/2013 - 7:59 AM)

MiniFusor™ / QuadFusor™ / T'Fusor™

Real-World Acoustics™



USER GUIDE

Thank you for purchasing **Auralex® MiniFusor™ / QuadFusor™ / T'Fusor™!**

These are highly effective acoustic diffusion devices that can be easily wall or ceiling mounted and the **QuadFusors** & **T'Fusors** are also sized to fit 2'x2' drop ceiling grids.

The **MiniFusors**, **QuadFusors** & **T'Fusors** are supplied with the **Auralex EZ-Stick Pro™** peel & stick tabs.

Be advised that the **EZ-Stick Pro Tabs** are designed for permanent installations and will damage drywall and painted surfaces when removed. For installations that require little or no damage to the wall surface we recommend the use of **Auralex EZ-Stick Tabs**. See your **Authorized Auralex dealer** for details.

Mark the target position on your wall or ceiling where the panel will be mounted using small pencil marks, pieces of masking tape or any similar non marring method. Be sure the wall surface where the **EZ-Stick Pro Tabs™** will adhere is free of dirt, dust or other oily contaminants. The use of rubbing alcohol to spot clean the wall where the tabs will adhere is recommended. Avoid the use of household cleaners.

Remove one of the release layers on the **EZ-Stick Pro Tabs** and affix it to the rear side of the perimeter flange at the desired locations, usually near the corners.

(Continued on back)

938-1212.QuadFusor TFusor MiniFusor User Guide.indd (09/05/2013 - 7:59 AM)

MiniFusor™ / QuadFusor™ / T'Fusor™ User Guide

Remove the second layer of release paper from each of the **EZ-Stick Pro Tabs**, carefully orient the panels position prior to contact with the wall, then press in place with moderate pressure.

The **MiniFusor, QuadFusor & T'Fusor** can be mounted using mechanical fasteners such as screws or nails but careful drilling of the flange will be required. Be sure to use the fastener appropriate for the type of wall construction.

The rear cavity of the **MiniFusor, QuadFusor & T'Fusor** can be filled with **Auralex Mineral Fiber Insulation** or covered with **Auralex PlatSheet™ / PlatFoam™** for low frequency absorption. When using Mineral Fiber Insulation use personal safety equipment appropriate for the handling of fiberglass.

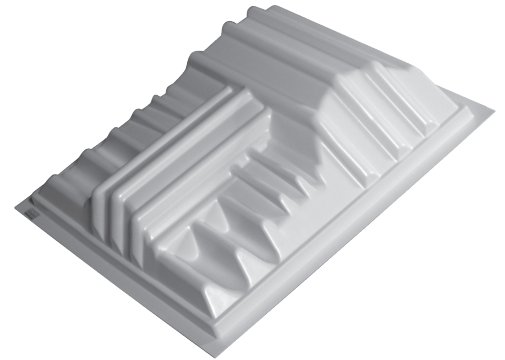
For more information or assistance visit Auralex.com or call 800-959-3343



MiniFusor™



QuadFusor™



T'Fusor™

www.Auralex.com | 1-800-959-3343 | AuralexInfo@Auralex.com | Total Sound Control®

MiniFusor™ / QuadFusor™ / T'Fusor™ User Guide

Remove the second layer of release paper from each of the **EZ-Stick Pro Tabs**, carefully orient the panels position prior to contact with the wall, then press in place with moderate pressure.

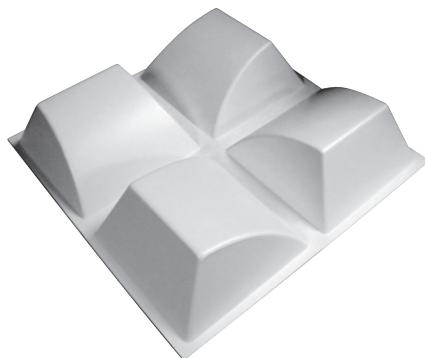
The **MiniFusor, QuadFusor & T'Fusor** can be mounted using mechanical fasteners such as screws or nails but careful drilling of the flange will be required. Be sure to use the fastener appropriate for the type of wall construction.

The rear cavity of the **MiniFusor, QuadFusor & T'Fusor** can be filled with **Auralex Mineral Fiber Insulation** or covered with **Auralex PlatSheet™ / PlatFoam™** for low frequency absorption. When using Mineral Fiber Insulation use personal safety equipment appropriate for the handling of fiberglass.

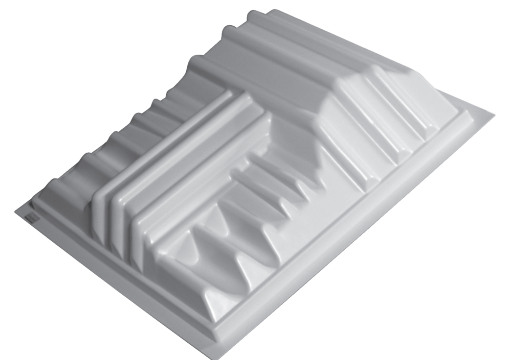
For more information or assistance visit Auralex.com or call 800-959-3343



MiniFusor™



QuadFusor™



T'Fusor™

www.Auralex.com | 1-800-959-3343 | AuralexInfo@Auralex.com | Total Sound Control®